

Automation Applications

New Product



WSPF Series
Signal converters



WPMZ Series
LCD Graphical Panel Meter



Product Introduction https://youtu.be/rBL784EB_Kg

WPMZ Operation <https://youtu.be/1Fro4qzebQY>

Watanabe

Automation Applications

Contents

Page

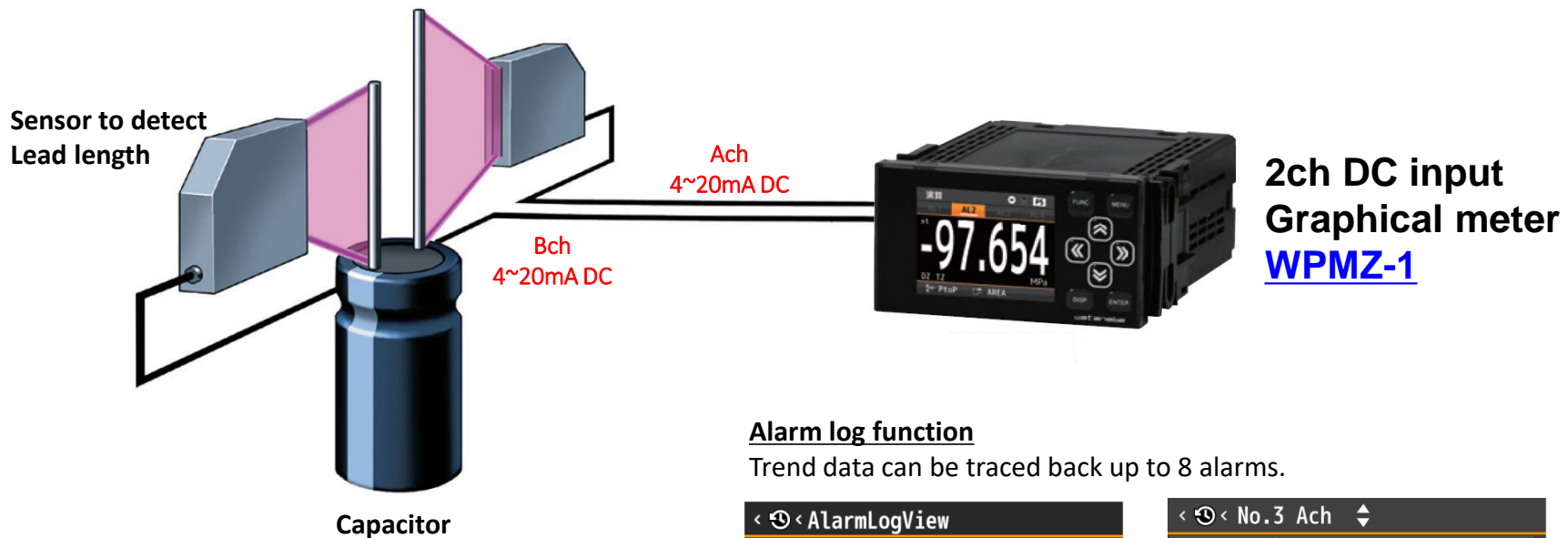
- | | |
|----------------------------------------------------------|-------|
| 1) WPMZ-1 Error detection in inspection process | ...3 |
| 2) WPMZ-1 Inspection of driving condition of rivets | ...4 |
| 3) WPMZ-1 & A6000 Food process management | ...5 |
| 4) WPMZ-3 Metal foil tension control | ...6 |
| 5) WPMZ-6 Control open/close of Power sliding door motor | ...7 |
| 6) WPMZ-1 2ch Temperature signal input | ...8 |
| 7) WPMZ-1 Thickness measurement by 2ch input | ...9 |
| 8) WPMZ-1 Thickness measurement with displacement sensor | ...10 |
| 9) WPMZ-3 Weight measurement of Conveyor | ...11 |
| 10) WPMZ-5 2ch input, Conveyor rotation / speed | ...12 |
| 11) WPMZ-6 with Modbus RTU / TCP IP | ...13 |
| 12) WPMZ-6 Tank Flow measurement | ...14 |



1. WPMZ-1 Error detection in inspection process

Input 2ch sensor signal (Ach, Bch) to WPMZ-1

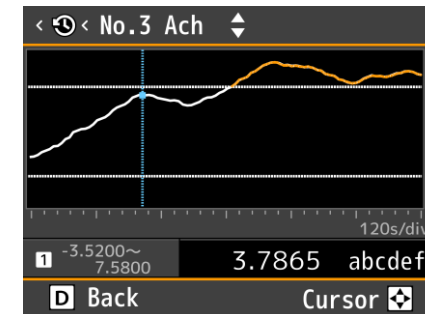
- 1) Capacitor lead length inspection can be performed using the arithmetic function (A-B).
- 2) In addition, it is equipped with an alarm log function that retains trend data before and after the comparison judgment alarm is generated.



Alarm log function

Trend data can be traced back up to 8 alarms.

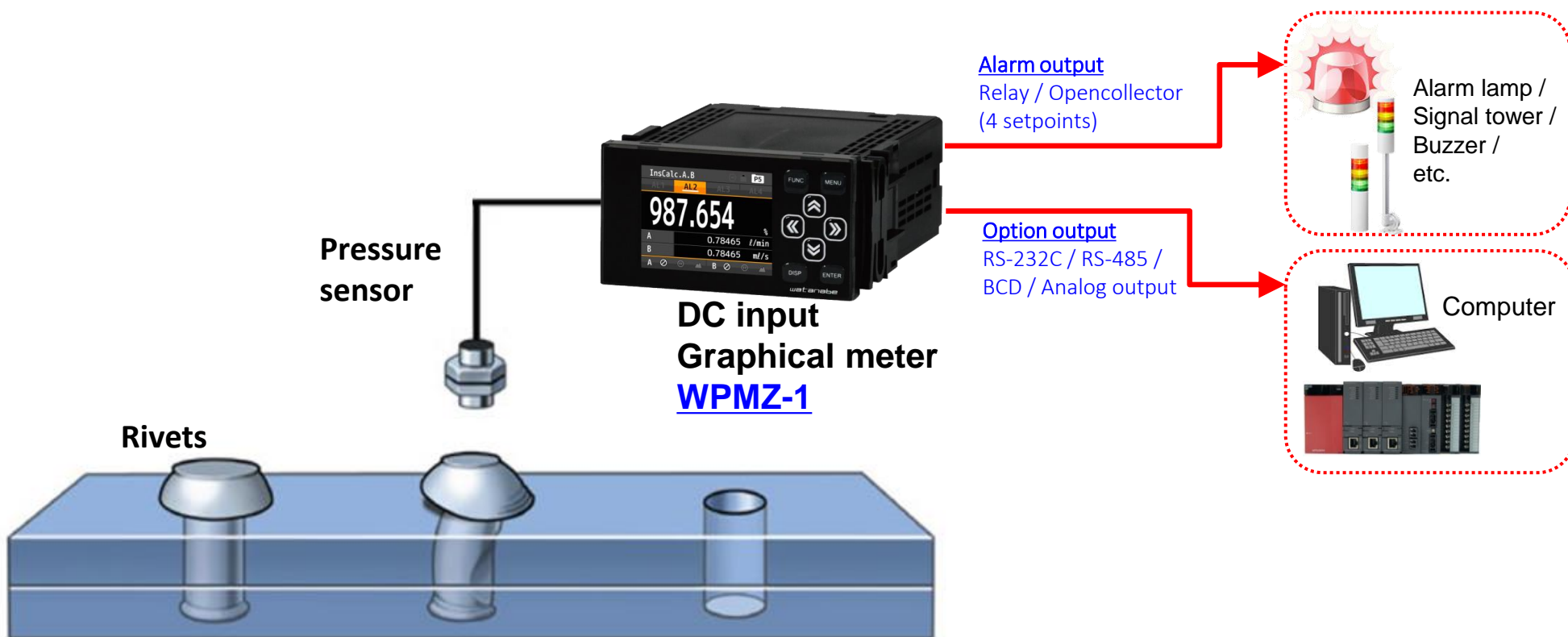
| AlarmLogView | | |
|--------------|----------|-------|
| No.1 | 99+d ago | > |
| No.2 | 5d ago | > |
| No.3 | 5h ago | > |
| No.4 | 5m ago | New > |
| No.5 | No data | |



2. WPMZ-1 Inspection of driving condition of rivets

Able to store several kinds of OK judgement range by using pattern select function

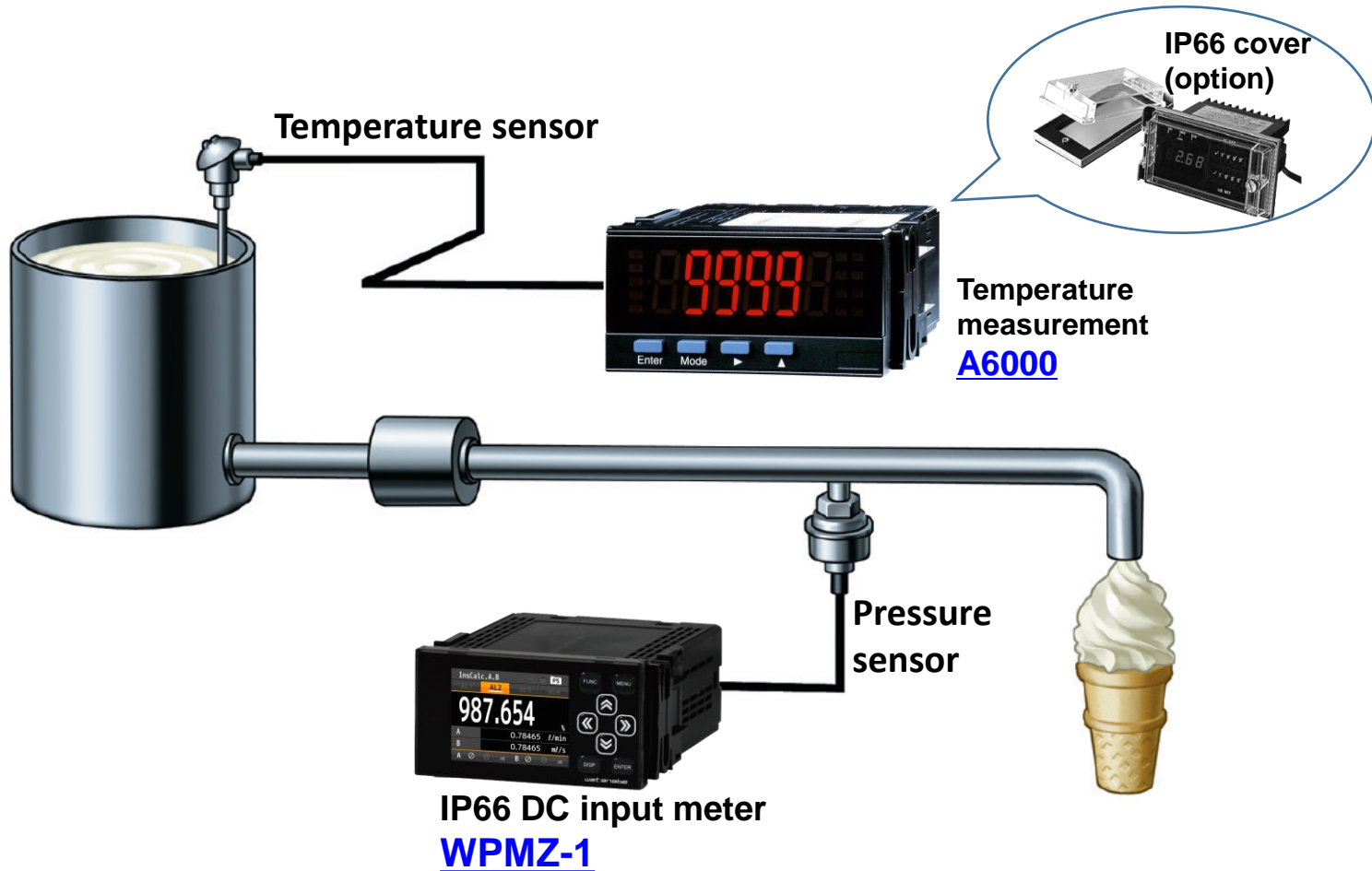
- 1) The pattern select function can store 8 pattern of HH/HI/LO/LL set points and scaling settings.
- 2) Tolerance range can be switched instantly by switching the pattern from the front SW or rear terminal, which is very convenient for flexible lines where multiple materials are mixed.



3. WPMZ-1 & A6000 Food process management

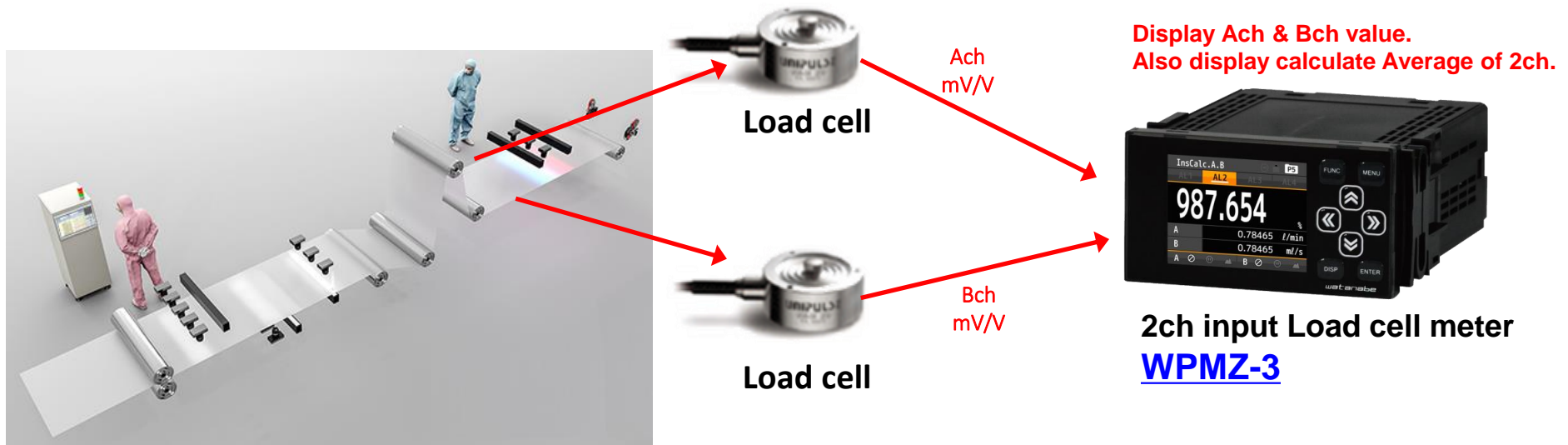
Dustproof/waterproof case structure allows cleaning from the front of the panel

- 1) WPMZ-1 conform IP66 standard. Useful for measuring temperature, pressure and measurement.
- 2) A6000 has IP66 cover by accessories for Dustproof/waterproof.



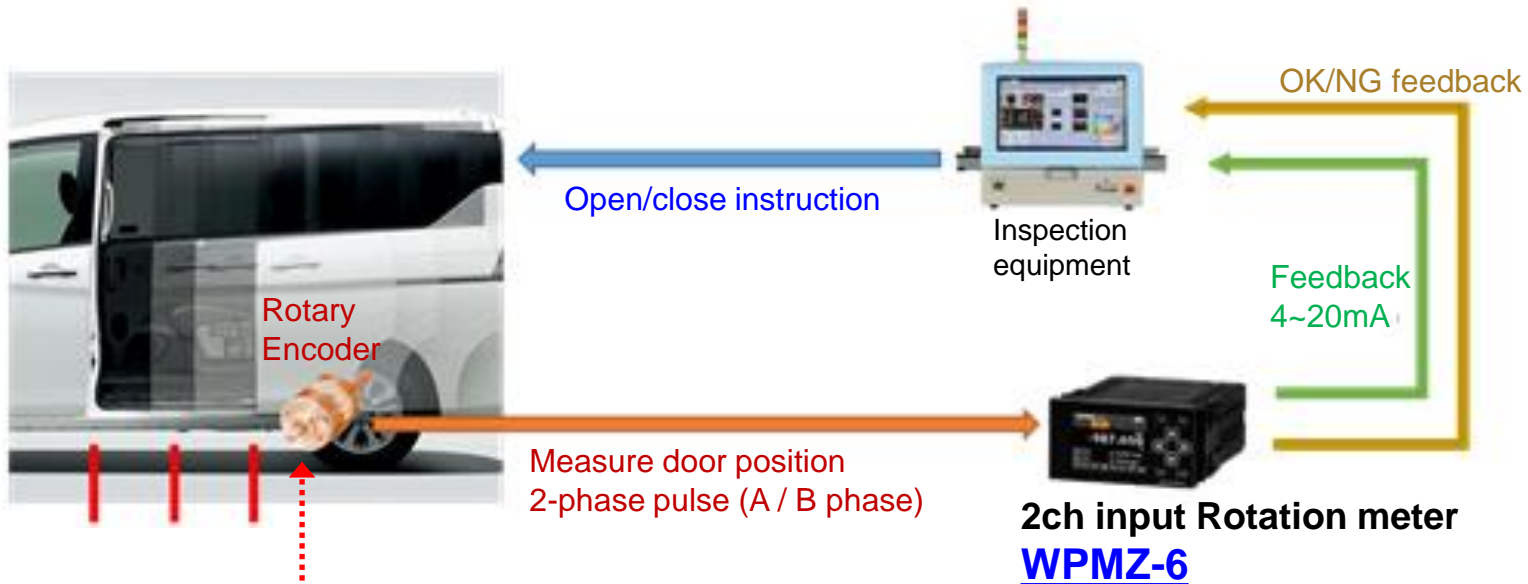
4. WPMZ-3 Metal foil tension control

In order to measure the tension on the left and right of the metal foil, able to display 2ch value from two load cells by 1pc WPMZ-3. Also display average calculation display of 2 channels to control left and right balance.

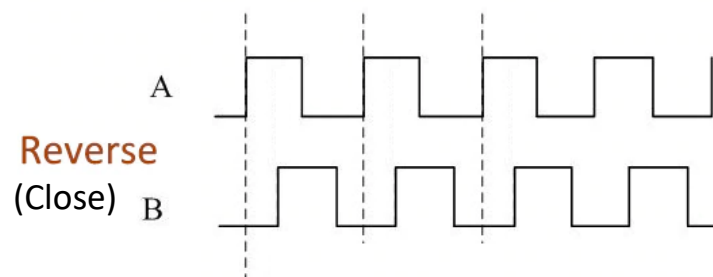
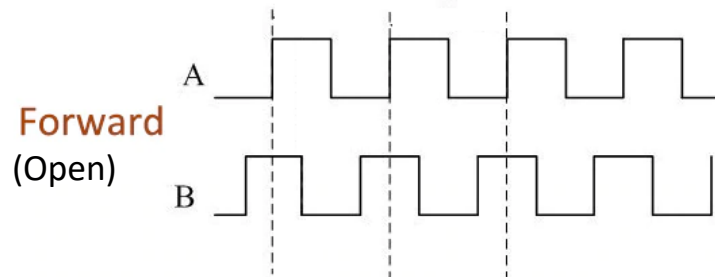


5. WPMZ-6 Control open/close of Power sliding door motor

Detect open/close of power sliding door by 2-phase pulse of rotary encoder.
WPMZ-6 Displays the torque, speed, and angle of the power sliding door motor.

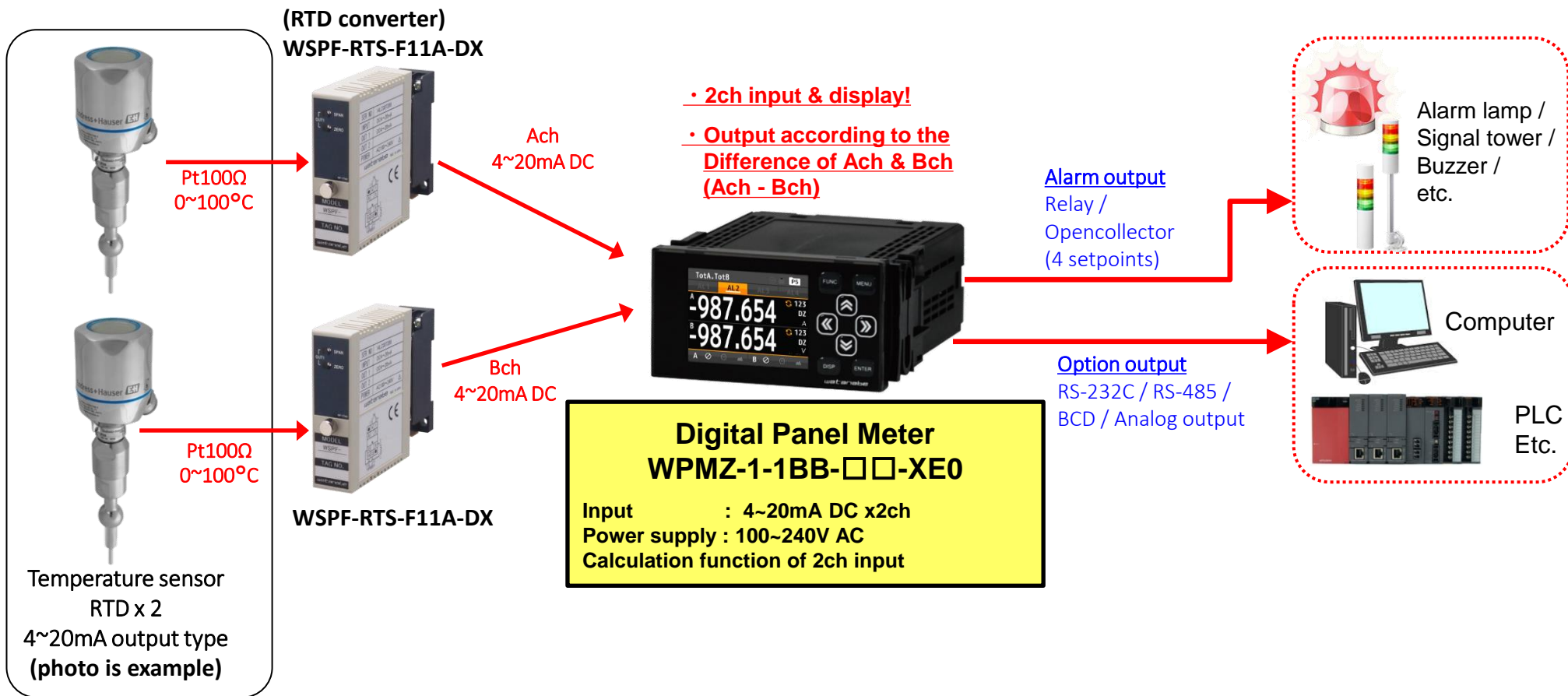


2-phase pulse, detect open and close of door position

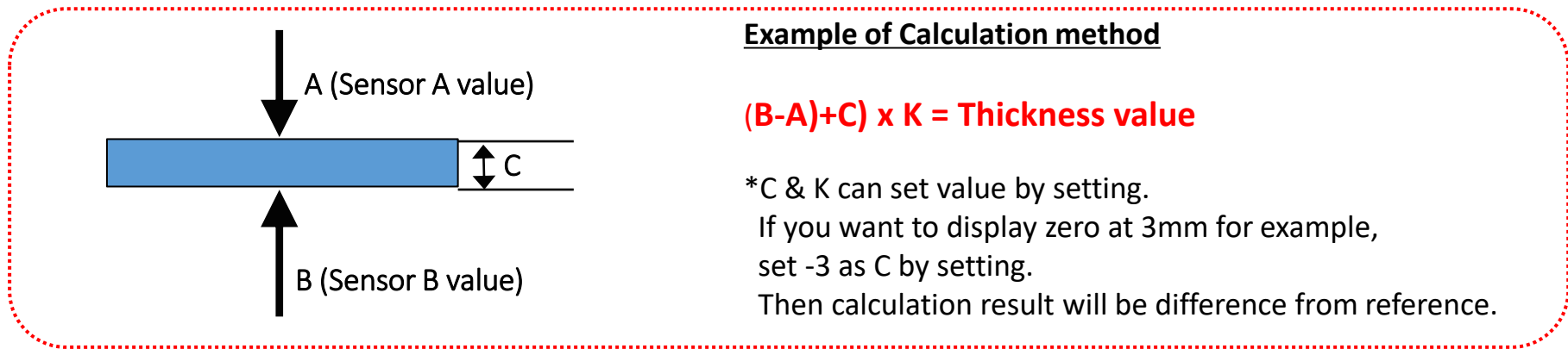
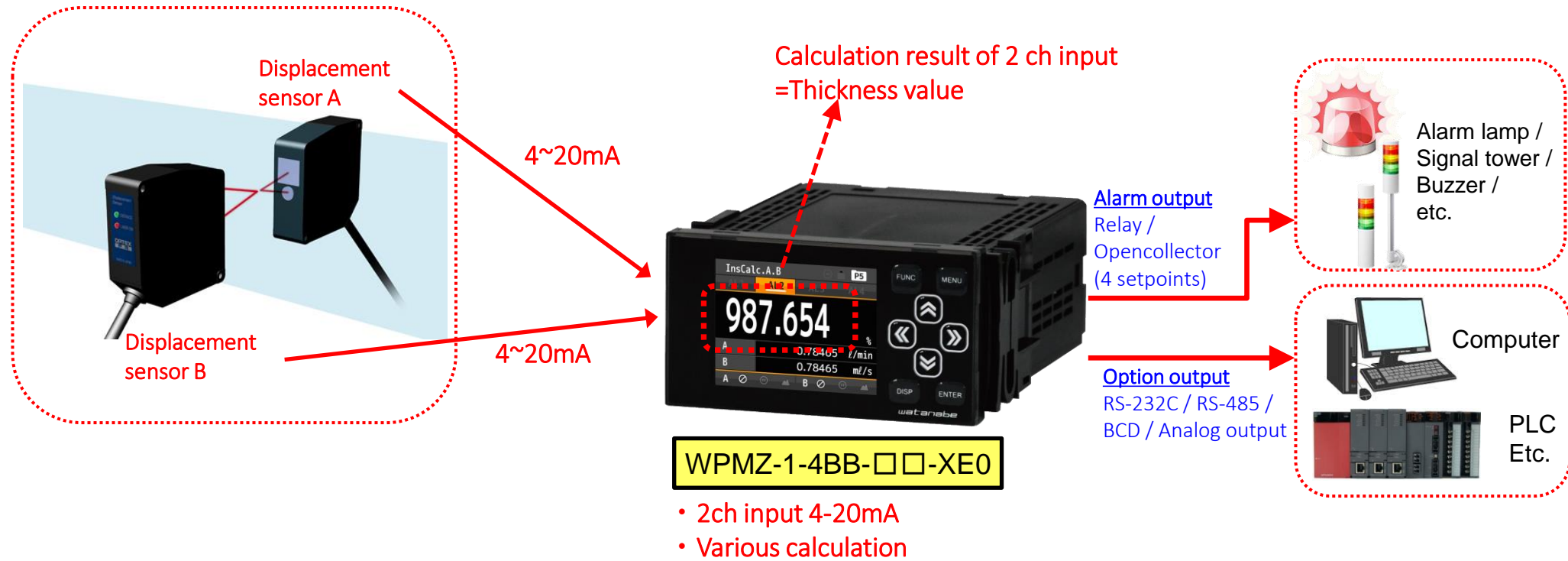


6. WPMZ-1 2ch Temperature signal input

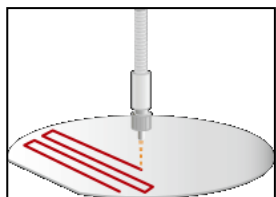
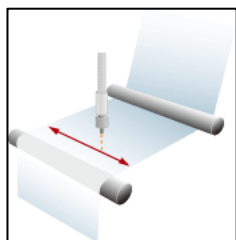
- 1) Convert RTD signal to 4-20mA by RTD converter WSPF-RTS-F11A-DX.
- 2) Input 2ch, Display Ach & Bch value in 1 display.
- 3) WPMZ-1 can **Calculate difference of 2ch input (Ach - Bch)**.
If calculation result is below or over setpoints (4 setpoints setting available) when one of RTD broken etc., then Relay signal will output to detect.



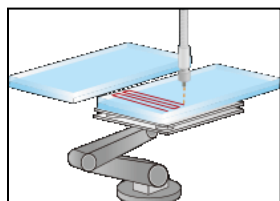
7. WPMZ-1 Thickness measurement by 2ch input



8. WPMZ-1 Thickness measurement with displacement sensor



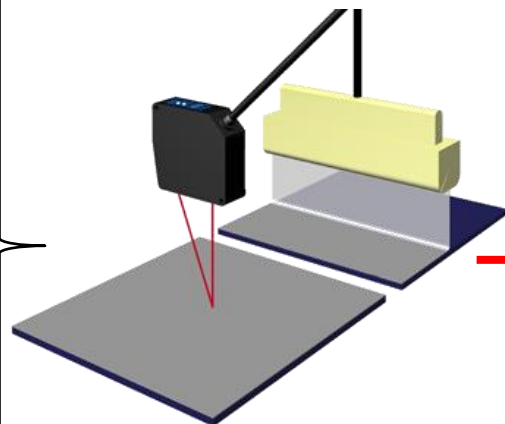
Wafer



FPD



Plating



Thickness measurement
Displacement sensor

Analog signal
(current / voltage)

WPMZ-1



Measure integrating current,
and outputs when Integrating
current is at constant value

9. WPMZ-3 Weight measurement of Conveyor

Conveyor at Site



Weight measurement of Conveyor at Site

Load cell



x2ch
Load cell
input

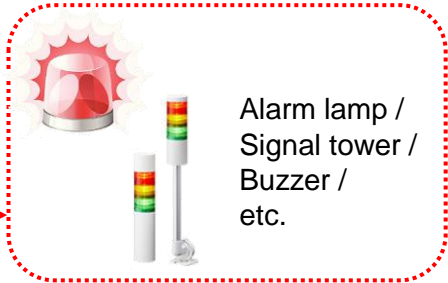


Strain gauge meter WPMZ-3

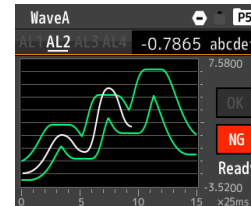
- 2ch Load cell signal input
- 2ch calculation function
- LCD Display
- Waveform comparison
- Multi hold function
- Alarm output (Relay / Open collector)
- Option output (BCD / Analog / RS-232C /RS-485)

Alarm output
Relay / Opencollector
(4 setpoints)

Option output
RS-232C / RS-485 /
BCD / Analog output



Waveform comparison



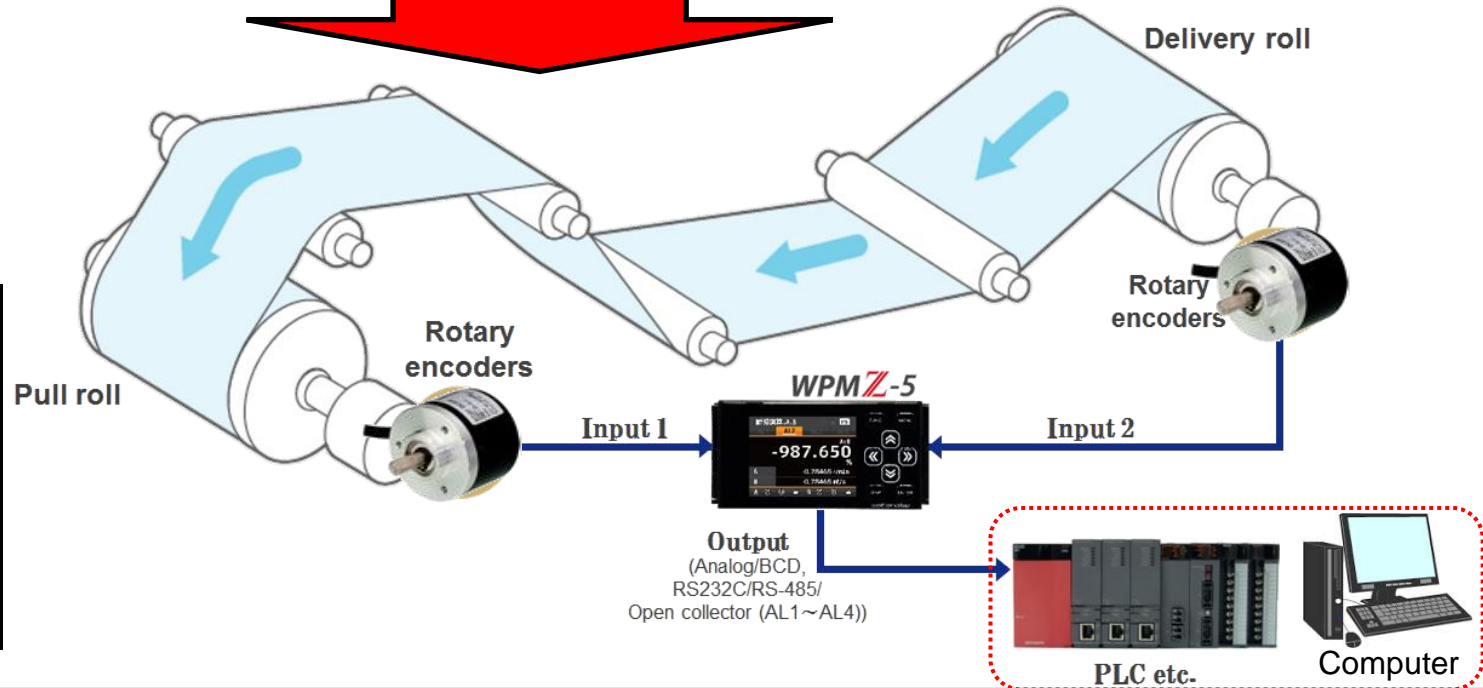
10. WPMZ-5 2ch input, Conveyor rotation / speed

WPMZ-5 Application : Conveyor

Rotation and Speed measurement of conveyor by WPMZ-5

Example

Drum filling Machine

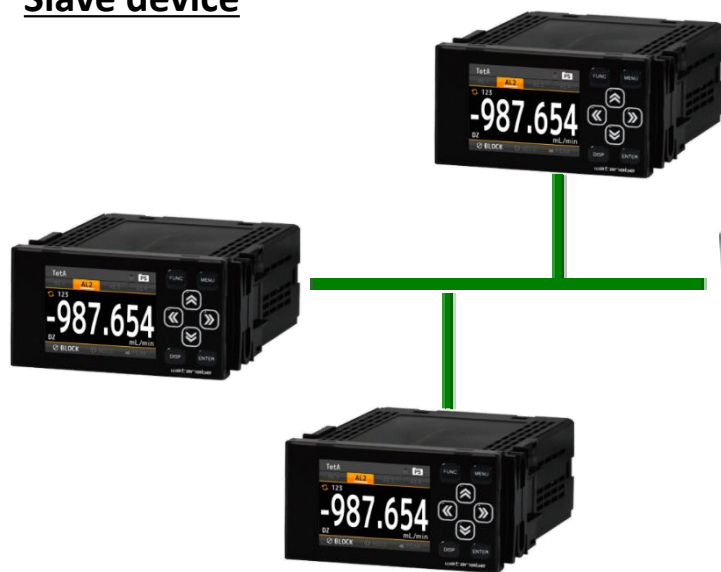


| 2 input Calculation | Calculation method |
|---------------------|------------------------|
| Absolute ratio | $(B/A) \times 100$ |
| Relative error | $(B/A - 1) \times 100$ |
| Subtraction | $B - A$ |
| Density | $(B/(A+B)) \times 100$ |
| Sum | $A + B$ |

11. WPMZ-6 with Modbus RTU / TCP IP

Connection of MODBUS TCT master and MODBUS RTU slaves (WPMZ-6)

Modbus RTU
Slave device



WPMZ-6-1PX-5R-XE0

Input : 1ch Pulse input
Option output : RS-485 Modbus RTU
Power supply : 100~240V AC

Modbus TCP
Master device



Control PC



Modbus TCP Gateway
(Example)
LINEEYE
SI-485MB series

Ethernet



12. WPMZ-6 Tank Flow measurement

Stabilize the mixing process by monitoring the difference of flow rate between two different liquid

| 2 input Calculation | Calculation method | WPMZ-6 | |
|---------------------|------------------------|---------------|-----------|
| | | Instantaneous | Totalized |
| Absolute ratio | $(B/A) \times 100$ | ○ | × |
| Relative error | $(B/A - 1) \times 100$ | ○ | × |
| Subtraction | $B - A$ | ○ | ○ |
| Density | $(B/(A+B)) \times 100$ | ○ | × |
| Sum | $A + B$ | ○ | ○ |

